

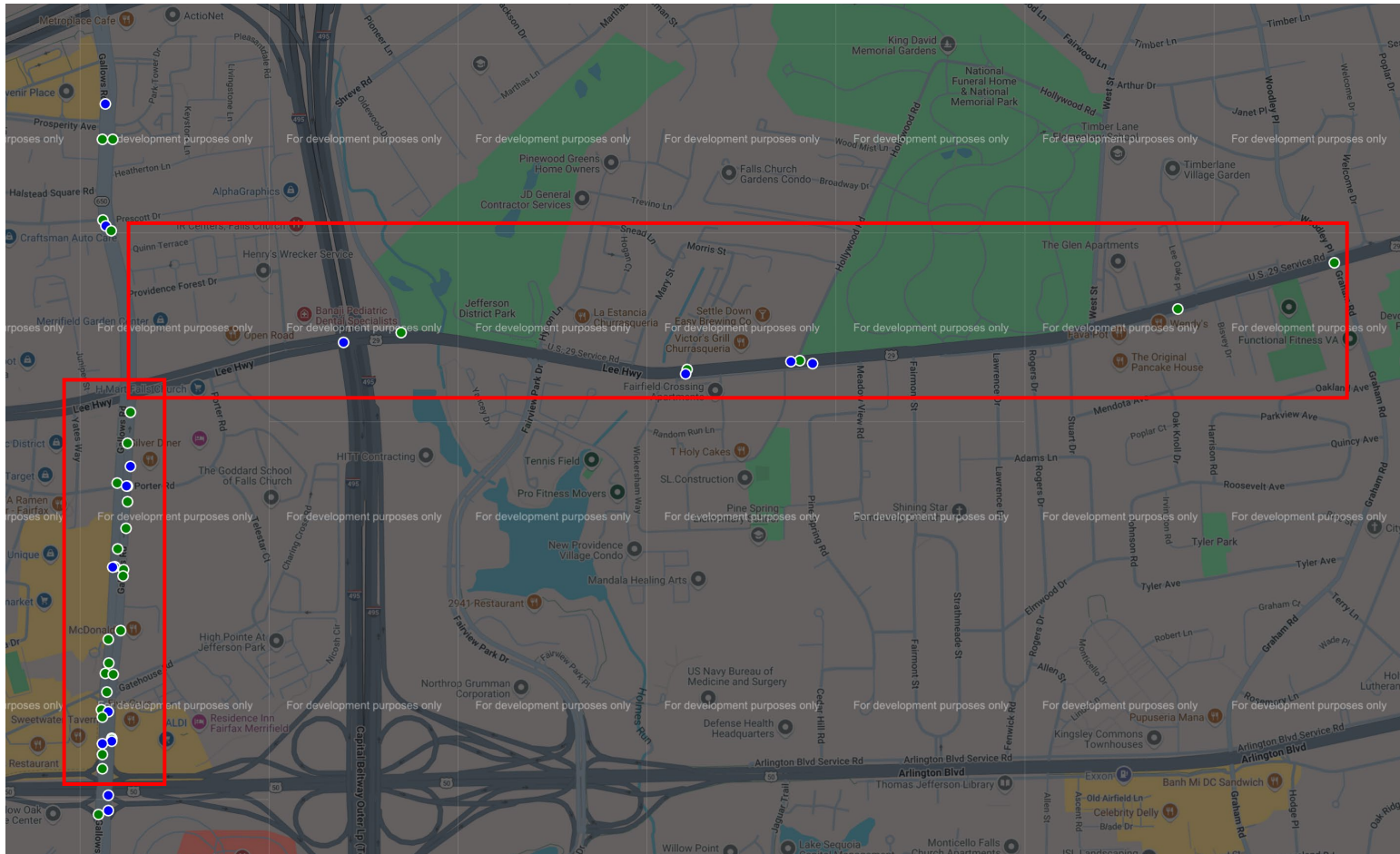
Timber Lane North Region - Boundary Review Traffic Safety Analysis

Takeaways from 2024 data:

- **Commute to Longfellow:** 10 total accidents (6 with injuries) on stretch of Route 7 plausibly crossed to access the school. 2 total school zone accidents (0 with injuries).
- **Commute to McLean High:** 10 total accidents (6 with injuries) on stretch of Route 7 plausibly crossed to access the school. 0 total school zone accidents.
- **Commute to Luther Jackson Middle School:** 37 total accidents (11 with injuries) on Route 29 and Gallows in the stretch between Woodley and Route 50. 2 total School Zone accidents (2 with injuries).
- **Commute to Falls Church High School:** 39 total accidents (14 with injuries) on Route 29 between Woodley and Fairview Park and Route 50 between Graham and Fairview Park. 7 total School Zone accidents (2 with injuries).

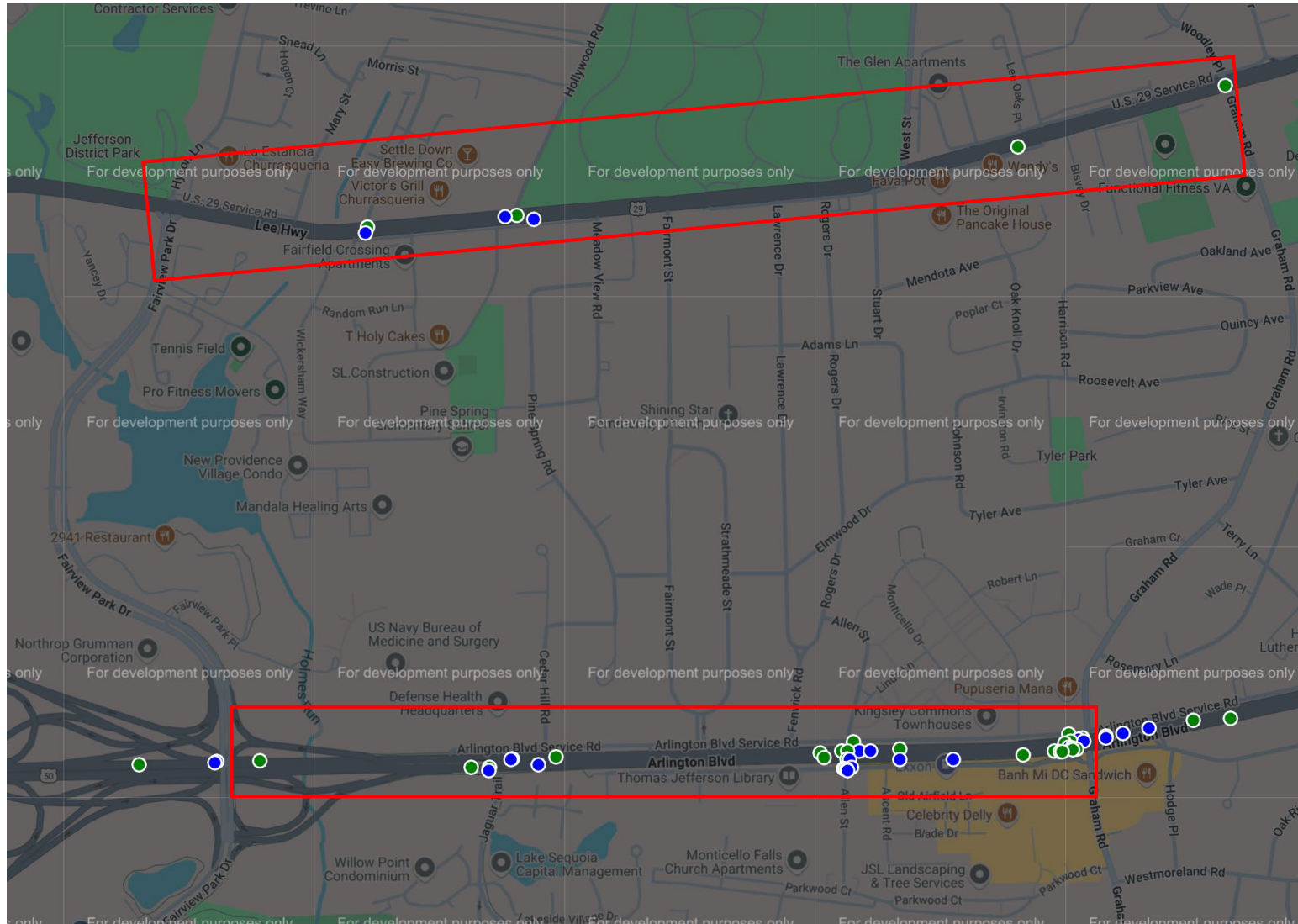
Notes on the Data:

- All data is derived from the Traffic Records Management, Reporting and Analysis Division of the Virginia Highway Safety Office
- All data accessed here in May 2025: [Statewide Crash Data | Virginia Department of Motor Vehicles](#)
- All maps created using 2024 data, by using the [Crash Location Map by Jurisdiction](#) feature
- Focus is on major roads (Routes 7, 29, 50, and Gallows Road) that the community would need to cross to arrive at the respective schools and looking at entire stretches of those roads that cover most plausible routes from the neighborhood. Areas included are designated by red boxes in the maps that follow.



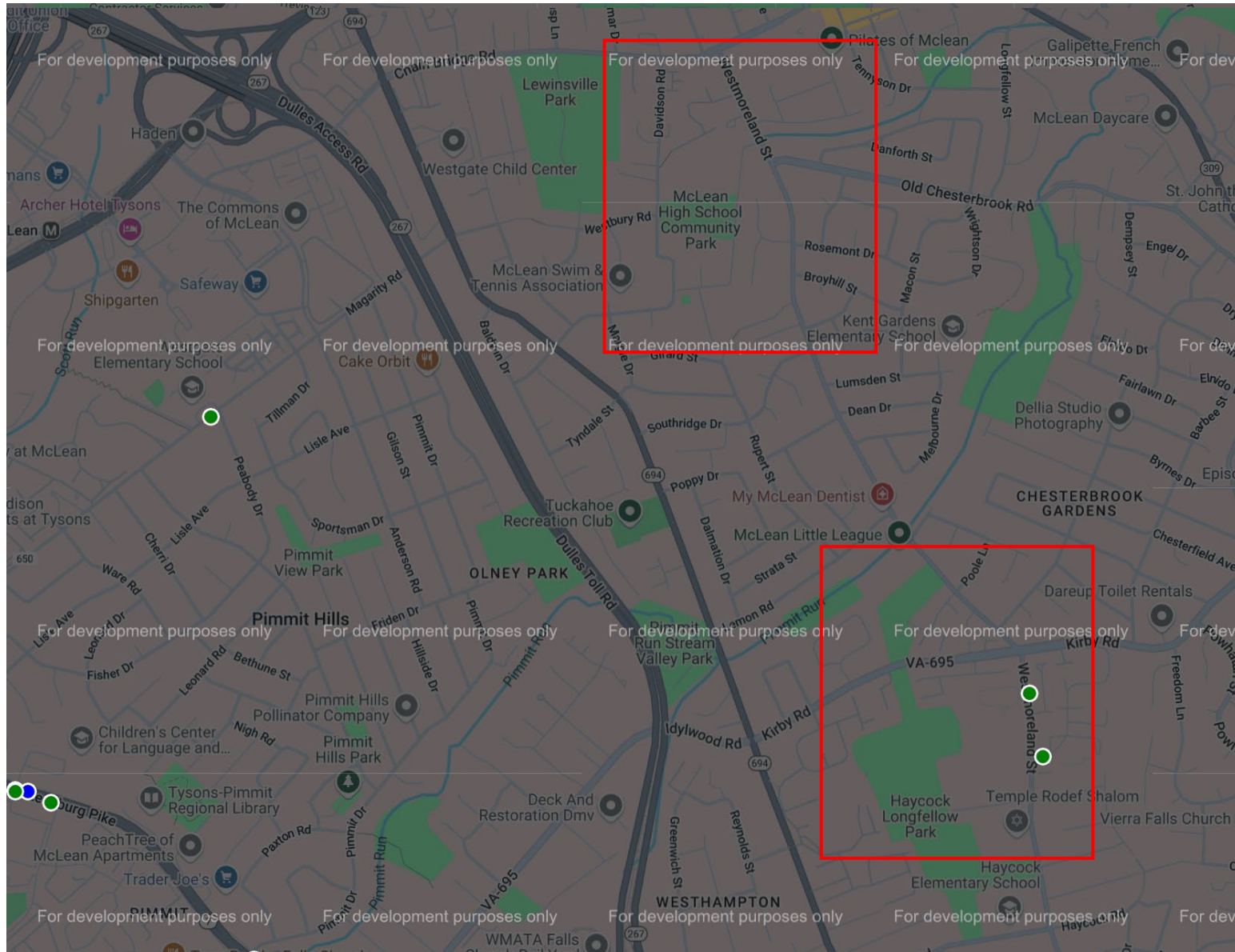
Timber Lane North → Luther Jackson

- Route 29, between Woodley and Gallows
- Gallows Rd., between Route 29 and Route 50
- 37 crashes
- 11 with injuries



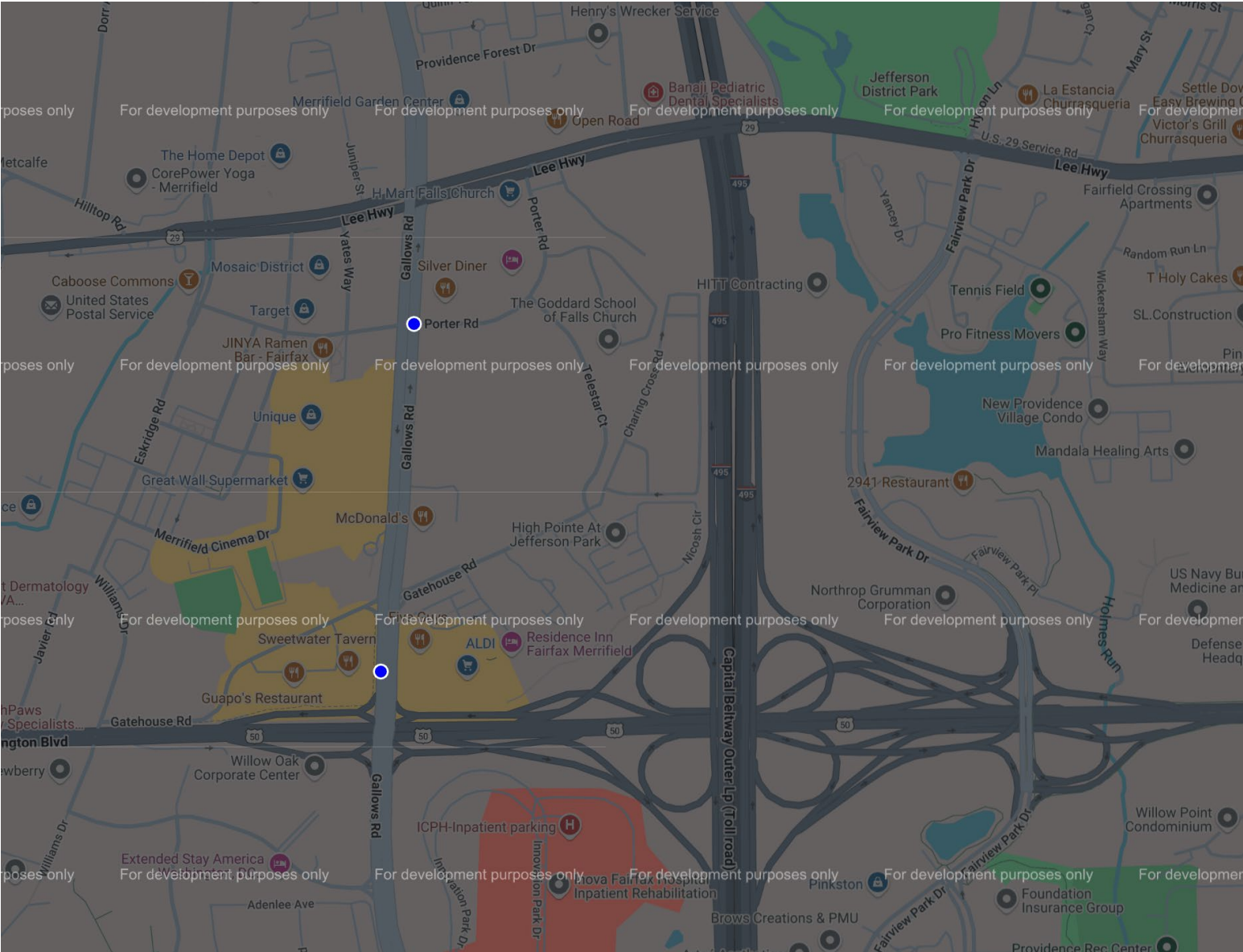
Timber Lane North → Falls Church High School

- Route 29, between Woodley and Fairview Park Dr.
- Route 50, between Graham and Fairview Park Dr.
- 39 crashes
- 14 with injuries



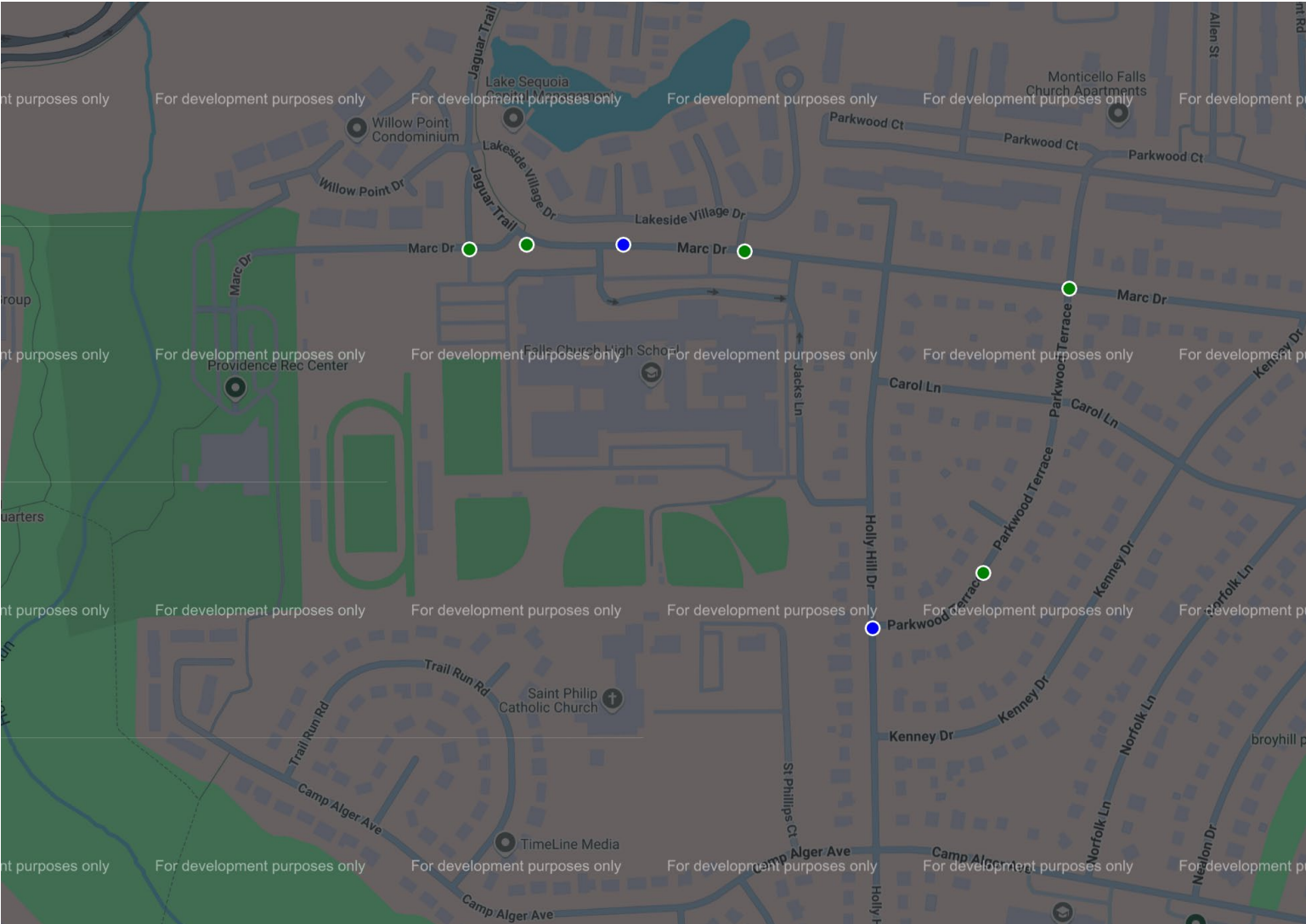
Longfellow MS + McLean HS

- 2 total designated School Zone crashes
- 0 with injuries



Luther Jackson MS

- 2 total designated School Zone crashes
- 2 with injuries



Falls Church HS

- 7 total designated School Zone crashes
- 2 with injuries